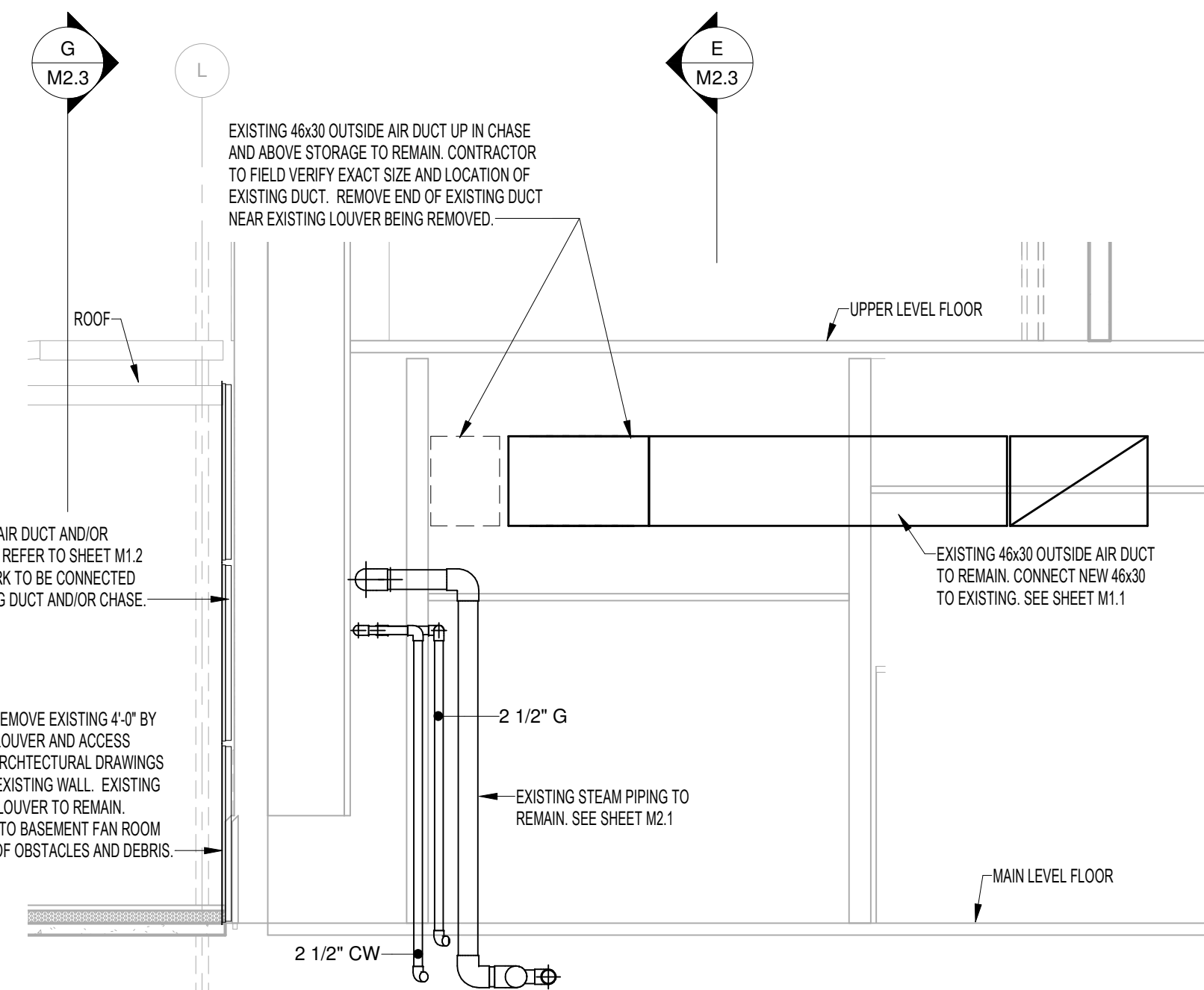
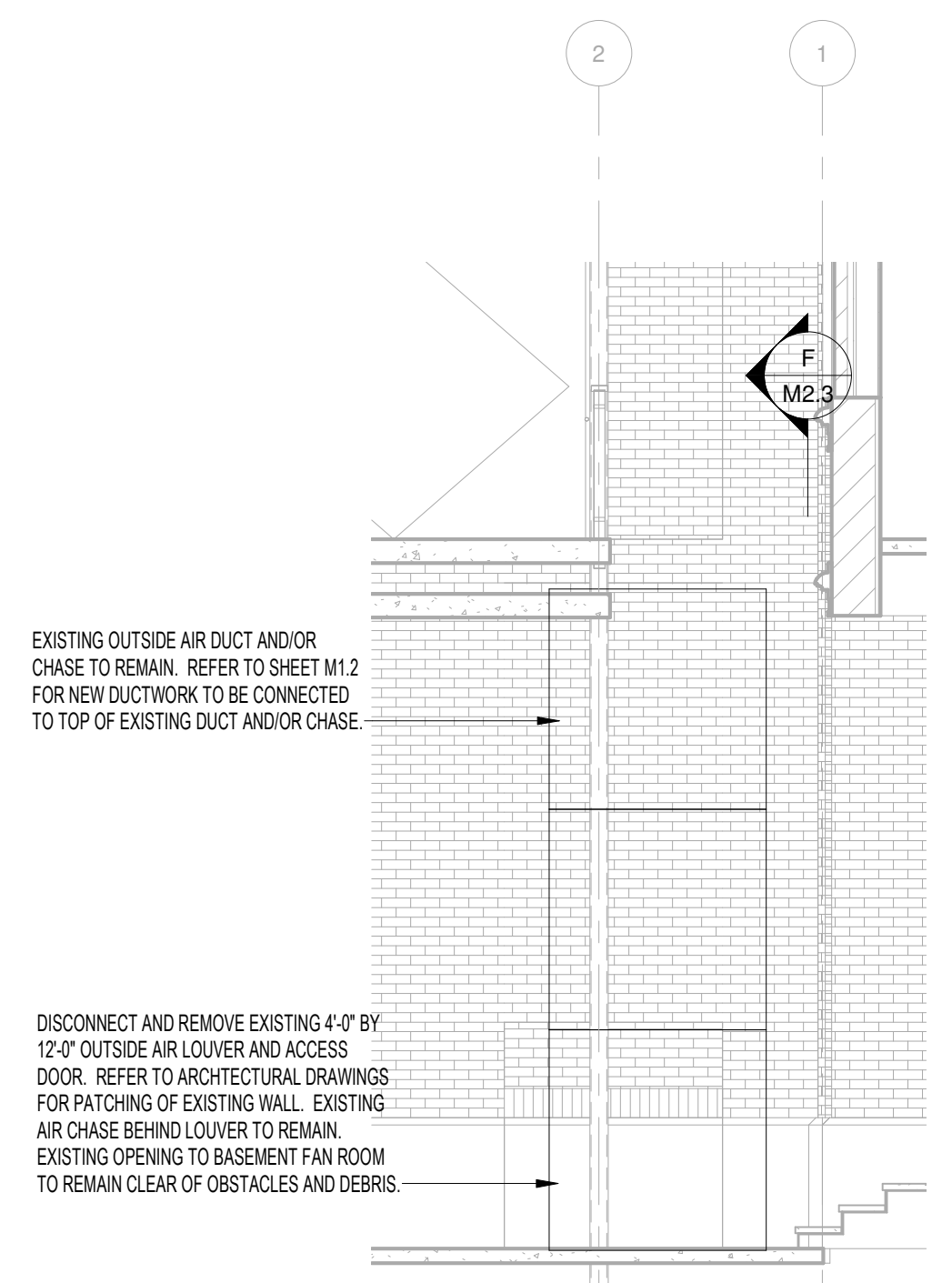


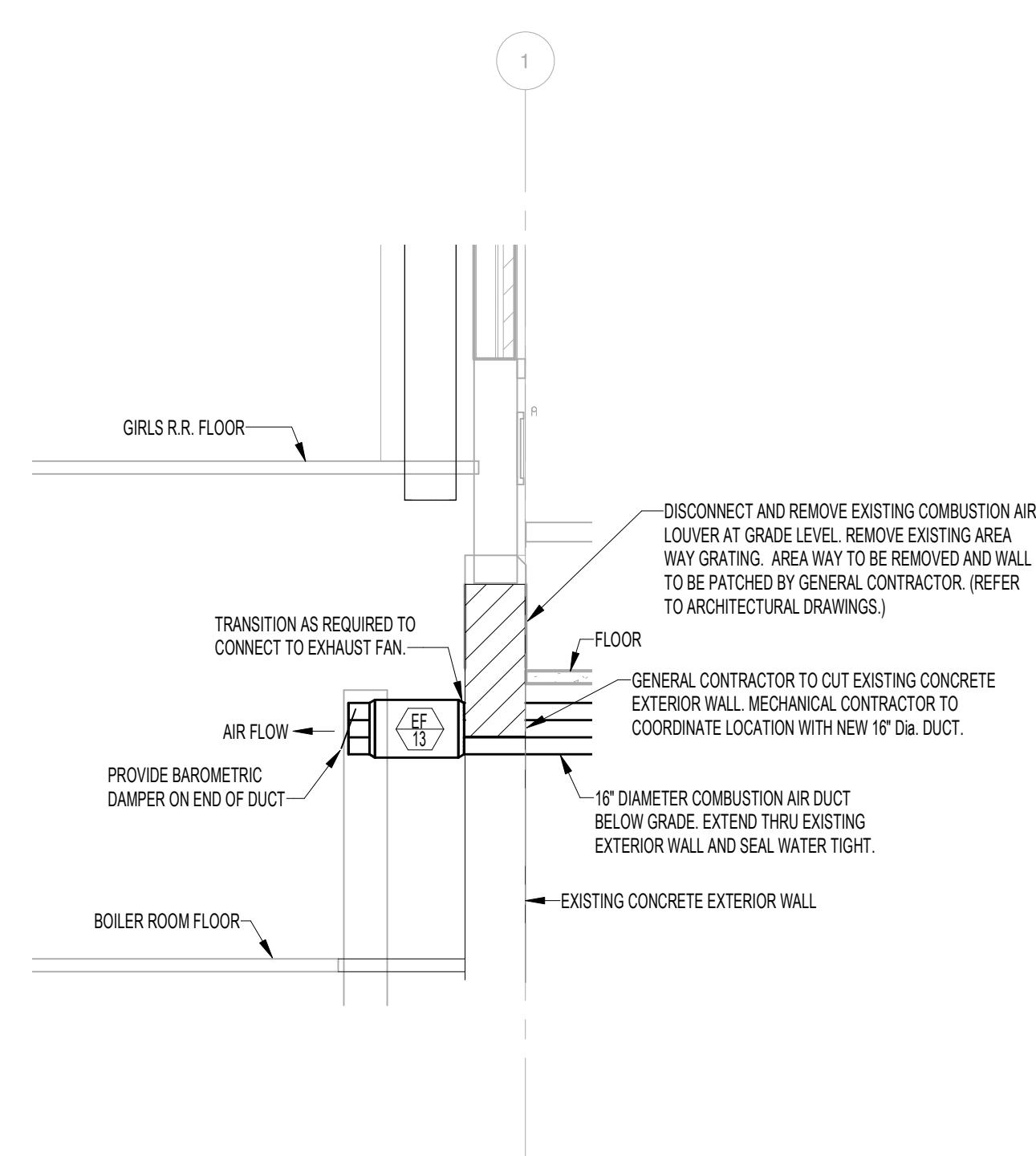
E MECHANICAL SECTION
M2.3 SCALE: 1/4" = 1'-0"



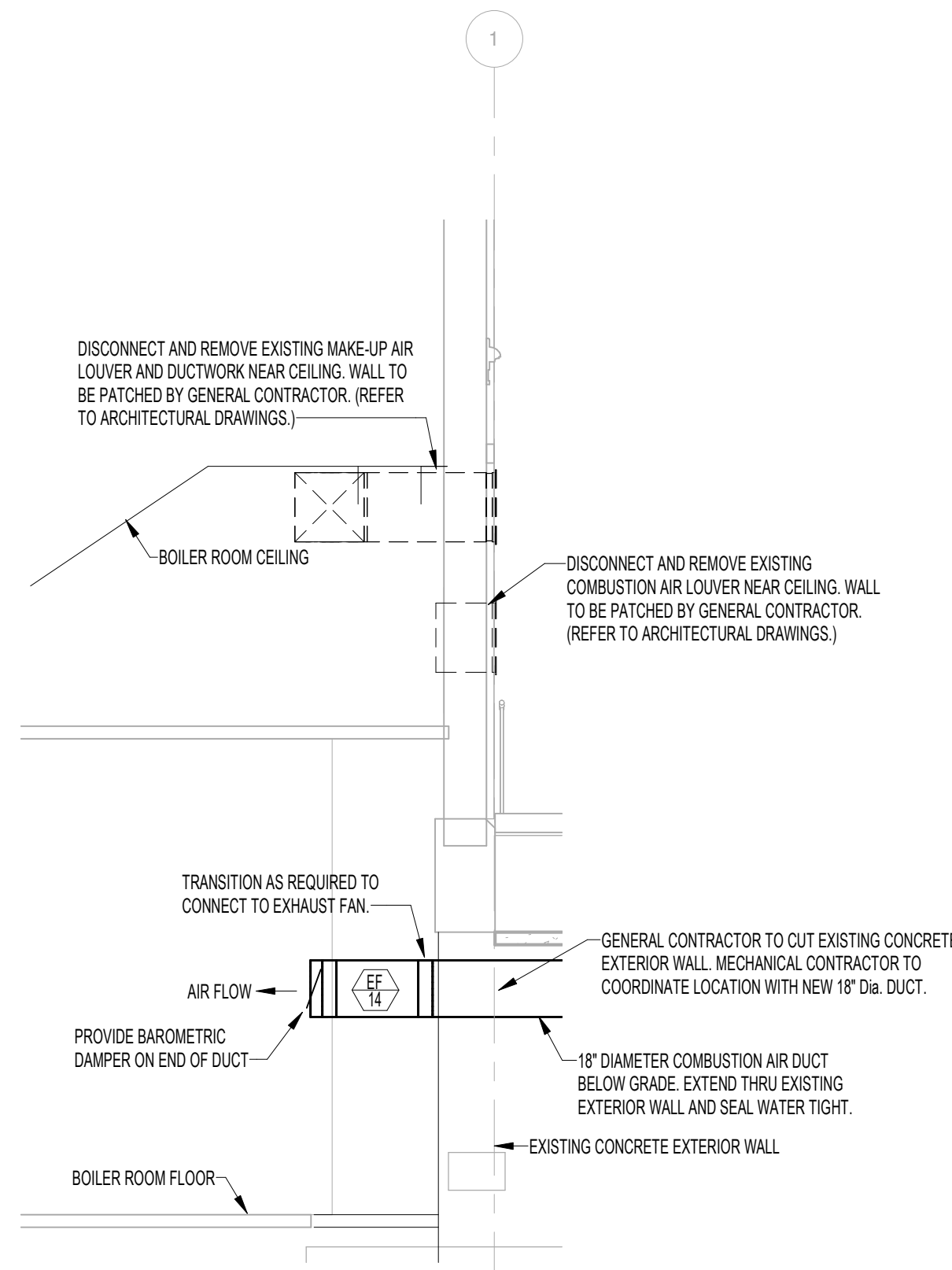
F MECHANICAL SECTION
M2.3 SCALE: 1/4" = 1'-0"



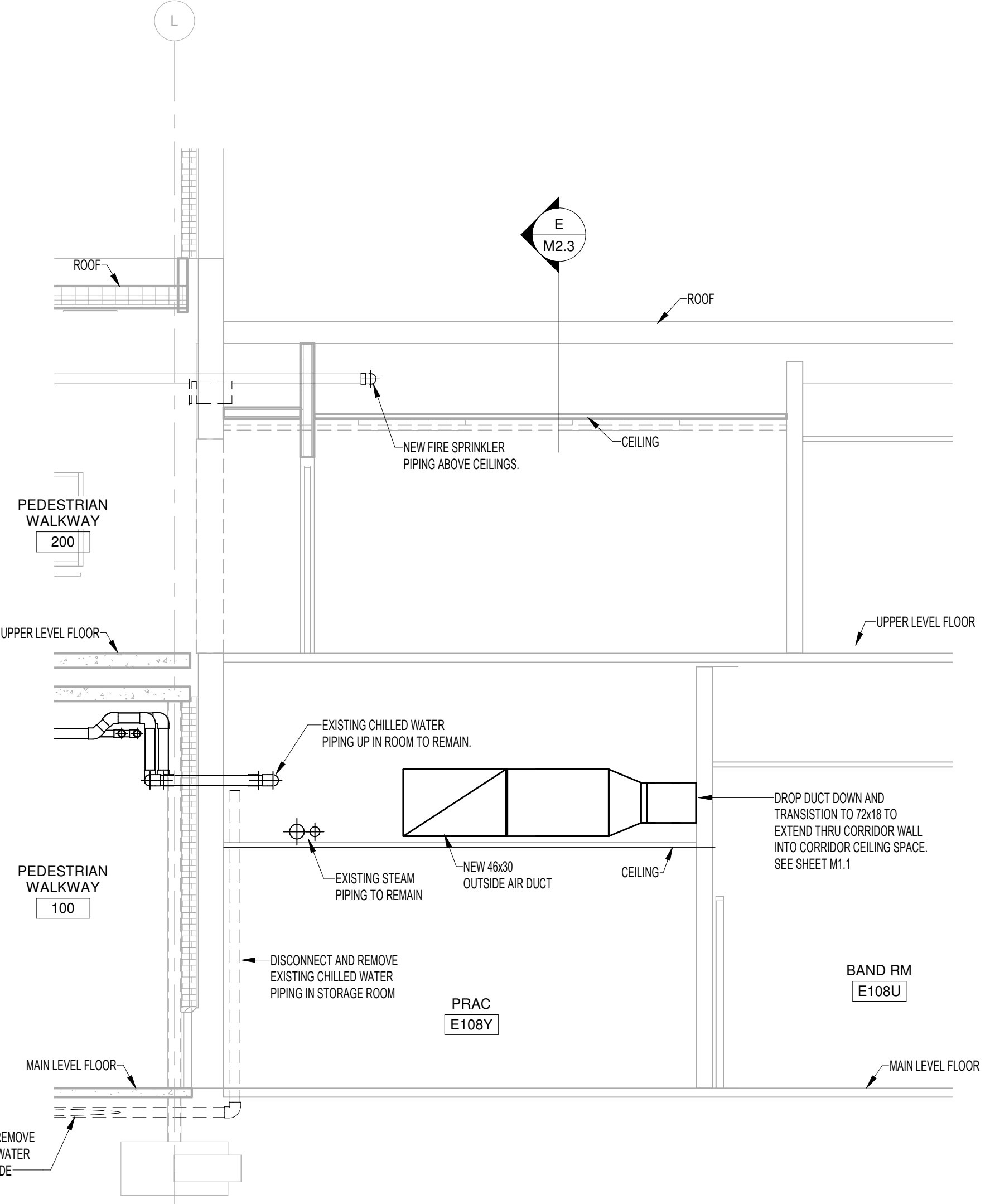
G MECHANICAL SECTION
M2.3 SCALE: 1/4" = 1'-0"



H MECHANICAL SECTION
M2.3 SCALE: 1/4" = 1'-0"



J MECHANICAL SECTION
M2.3 SCALE: 1/4" = 1'-0"



K MECHANICAL SECTION
M2.3 SCALE: 1/4" = 1'-0"

HUMMEL
 a: 2785 North Bogus Basin Road
 Boise, Idaho 83702
 p: (208) 343.7523
 f: (208) 343.0940

Project:
**POCATELLO HIGH SCHOOL -
 ADDITION & RENO.**

325 N ARTHUR AVE
 POCATELLO, ID 83204

Sheet:
MECHANICAL SECTIONS

Revisions: Δ

| | |
|----------|--------------------|
| DATE | DESCRIPTION |
| 06/20/20 | ISSUED FOR BIDDING |

Engineered Systems Associates
 1355 EAST CENTER
 POCATELLO, IDAHO 83201
 PHONE: (208) 233-0501
 FAX: (208) 233-0529
 EMAIL: esa@engsystems.com
 ESA JOB NUMBER: 18075

Project No: 18075
 Project Number: M Jensen
 Drawn By: D Sudweeks
 Checked By: D Sudweeks
 Date: 01/24/2020

Sheet No:
M2.3

BID SET - 01/24/2020